



DATA MIGRATION

BridgeWare: Migration without Migraines.

BridgeWare is an Extraction, Transformation and Loading tool that greatly simplifies the task of moving data between databases and files on MPE, NT, UNIX and LINUX systems. BridgeWare supports many database types, including: IMAGE, HP Eloquence, DB2, Oracle, SQL Server, ODBC-compliant databases, and files such as KSAM, flat and delimited files.

More than the usual ETL capability.

This is a different breed of tool. BridgeWare can capture changes in databases and files as they occur, both on MPE and on open systems, and then replicate these changes to other databases, on other computers, either in real time or at scheduled intervals.

This function was originally developed to handle cross-platform data synchronization for data warehouses, application interchange and Web interfaces. But the ability to pass data in real time between different types of databases on different operating systems gives you a lot of choices for your migration off the HP e3000. Some examples are:

- **Perform staged migrations:**
Applications can be brought over one at a time, instead of all at once. For instance, Financials could be brought over at one point in time and Manufacturing at some later point. There's no rush, because BridgeWare can pass data back and forth between Financials in an open systems environment and Manufacturing on the e3000. And do it all in real time.
- **Run applications in parallel:**
Imagine being able to run tests in both your old and new environments and make sure everything in the new environment performs as expected before committing to the changeover. Just let BridgeWare build, say, an Oracle database for you and populate it with data from IMAGE. BridgeWare will then keep the Oracle environment updated with every change that occurs in the IMAGE database. Now, you can test all your reports and open systems interfaces using current data until you're satisfied they work properly.
- **Take "snapshots" of your data:**
This can be a lifesaver when you can't afford to have users offline. When BridgeWare takes a snapshot of your MPE data, users can continue using the MPE system while the "snapshot data" is migrated to open systems.

TO	FROM				
	IMAGE	ORACLE	DB2	SQL SERVER	FLAT FILES
IMAGE	YES	YES	YES	YES	YES
ORACLE	YES	YES	YES	YES	YES
DB2	YES	YES	YES	YES	YES
SQL SERVER	YES	YES	YES	YES	YES
FLAT FILES	YES	YES	YES	YES	YES

BridgeWare takes you where you want to go.

BridgeWare combines powerful ETL with GUI ease.

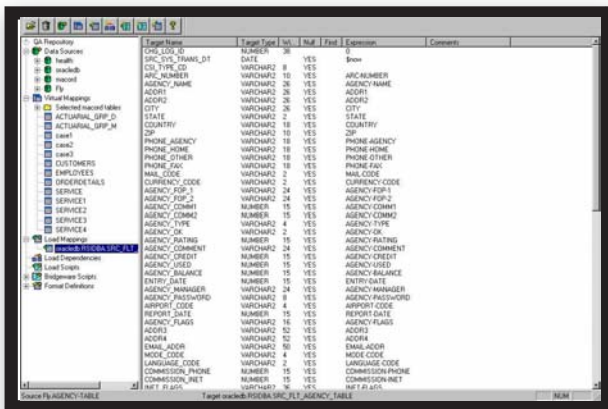
Once the full load is complete, incremental changes to the MPE database are then applied to the relational database. Users can then cut over the open systems environment immediately, because the MPE and relational data is synchronized.

- **Avoid needless MPE development costs:**
Eventually, your MPE system will be retired. So there's really nothing to gain by developing programs, reports and analytics for it. Because BridgeWare can create a relational database and populate it with current IMAGE data, the time and effort to develop new reports, queries, feeds to data warehouses, etc., can now be focused on open systems.

Work with a timesaving interface.

Now, it doesn't take a guru to map and move data off MPE into relational environments. BridgeWare's *Studio* GUI workbench is so user friendly, almost anyone in IS can do all this from their desktop – even if the actual movements will take place on different platforms in remote locations:

- **Browse data in your IMAGE database.**
See how it's really stored, not how someone told you it was stored. BridgeWare also



Studio GUI Workbench lets you control every aspect of the migration.

provides you a preview of how your data will look in the new relational database. If it “looks good” to you, you don’t even have to move it.

- **See “dirty data.”**
As you browse, BridgeWare highlights and points you to fields and items that have dirty data in them. These are special characters or data you’ve mapped to target fields that will not convert correctly.
- **Build relational tables.**
Just map the data in Studio, and BridgeWare will do the rest for you, including performing any kind of data transformation you specify.

The one-of-a-kind tool for migrations of any kind.

Whether you want an all-at-once “big bang” migration, the greater certainty of a staged migration, or parallel testing for the compulsively risk-averse, nothing handles the job better, faster or more cost-effectively than BridgeWare. If time, money, staff resources or your mental health are key issues, there’s really no alternative.

A Proven Product. A Proven Partner.

Taurus participates in the “Oracle Business Alliance Program” and is certified as an “HP User Reference” company. Over the years, Taurus has helped hundreds of organizations of all types solve their most difficult data problems. Isn’t that exactly the kind of partner you need?

For case histories and complete details on BridgeWare, contact us today.

powered by



BridgeWare

co-product of Quest Software & Taurus Software



Taurus Software
We Make Data Liquid.

©2002 Taurus Software, Inc., 410 Brewster, Redwood City, CA 94063.
Phone: 650-482-2022. Fax: 650-482-2010. Email: sales@taurus.com. Web: www.taurus.com.